



Source Capture Solutions

EXTRACTION ARMS, HOODS & ACCESSORIES



ENGINEERING YOUR SUCCESS.

Why Choose Our Extraction Arms & Extraction Hoods?



Performance

- No internal obstructions provide lower resistance and greater extraction power.
- Optimized extraction arm hood geometry provides capture from greater distances and locations requiring fewer position adjustments and less interference.
- Base-mount and wall-mount extraction hoods offer the broadest “effective zone” of any source capture system on the market today.

Durability

- Durable metal construction stands up to the most challenging industrial applications.
- Powder-coated finish that has passed a 500-hour salt spray test.
- Flexible joints feature UL flame resistant material for use in thermal processes where sparks are routinely present.



Flexibility

- Extraction arm ships fully assembled for fast and easy installation.
- Wide range of sizes and configurations provide the right solution capable of contaminant capture and fitting within your process.
- The control tension at each extraction arm joint is adjustable for better positioning control.
- The hood pivots independent of the extraction arm for easy positioning.
- Base-mount and wall-mount extraction hoods can be adapted to a multitude of operators’ work area requirements.



Source Capture Solutions

Capture, Extract, Filter

The most effective and energy-efficient way to control nuisance airborne emissions is to collect the pollutant at or near the source of generation. The benefits of source capture include:

- Reduced facility cleaning and maintenance by preventing pollutant migration.
- Improved worker health by protecting the breathing zone from harmful pollutants resulting in higher productivity plus lower absenteeism due to illness.
- Lower operational costs by capturing contaminants at the source which requires the least amount of energy consumption.
- Achieve a cleaner and healthier workplace and stay compliant with environmental regulations by stopping the spread of fumes, smoke, dusts and other airborne pollutants at the source with United Air Specialists' extraction arms, telescopic arms, hoods and accessories.

Recommended Applications

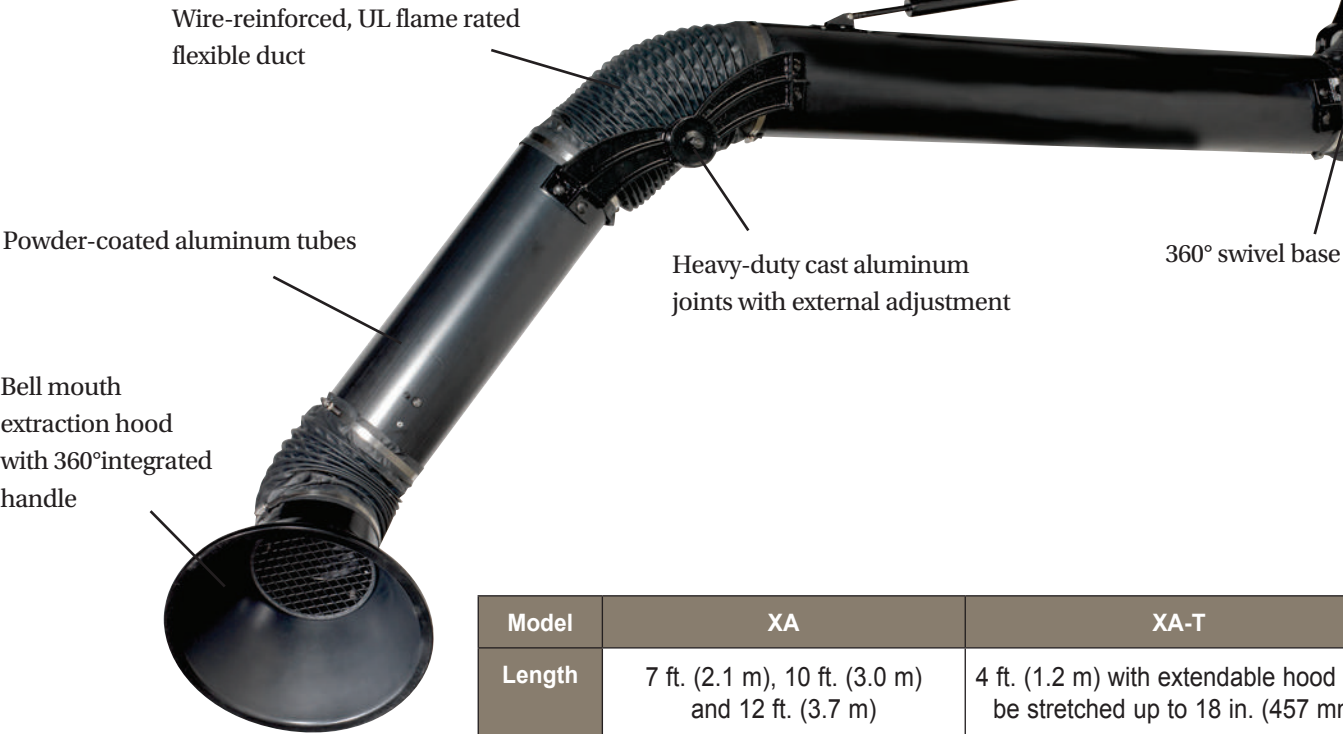
- Thermally-generated Fumes
- Welding
- Plasma and Laser Cutting
- Soldering
- Metalworking
- Mixing, Batching and Filling Stations
- General Workbench Processes and Applications

Complete System

Our extraction arms and hoods can be connected to UAS' wide range of central system and work station DustHog® and SmogHog® collectors for fully automated control and capture of airborne pollutants. Our Application Engineers will help you configure a system to meet your specific process requirements.

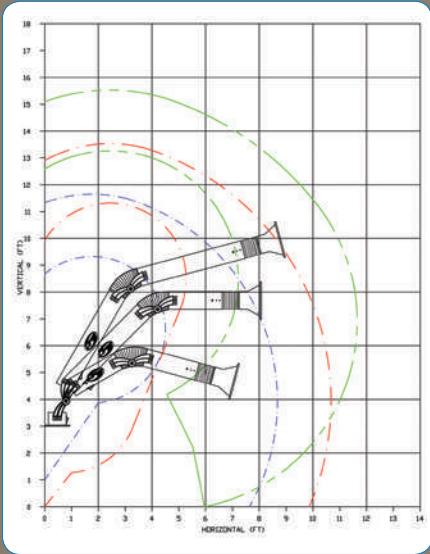


Extraction Arm Features & Specifications

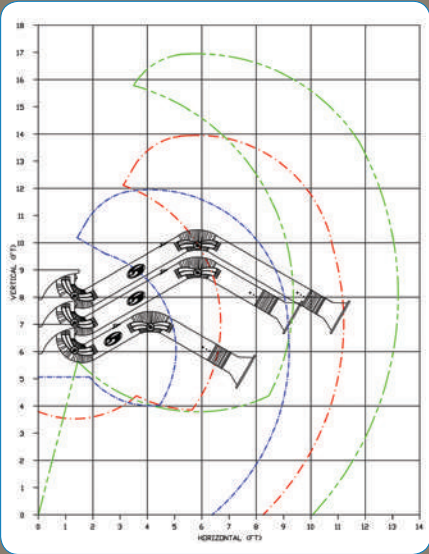


Model	XA	XA-T
Length	7 ft. (2.1 m), 10 ft. (3.0 m) and 12 ft. (3.7 m)	4 ft. (1.2 m) with extendable hood can be stretched up to 18 in. (457 mm)
Diameter	6 in. (152 mm) and 8 in. (203 mm)	

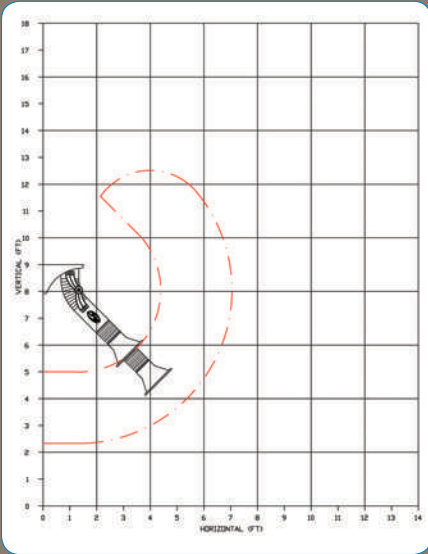
Extraction & Telescopic Arms Maintain Optimal Positioning Over Time



Model XA Base-Mount
Extraction Arm Reach



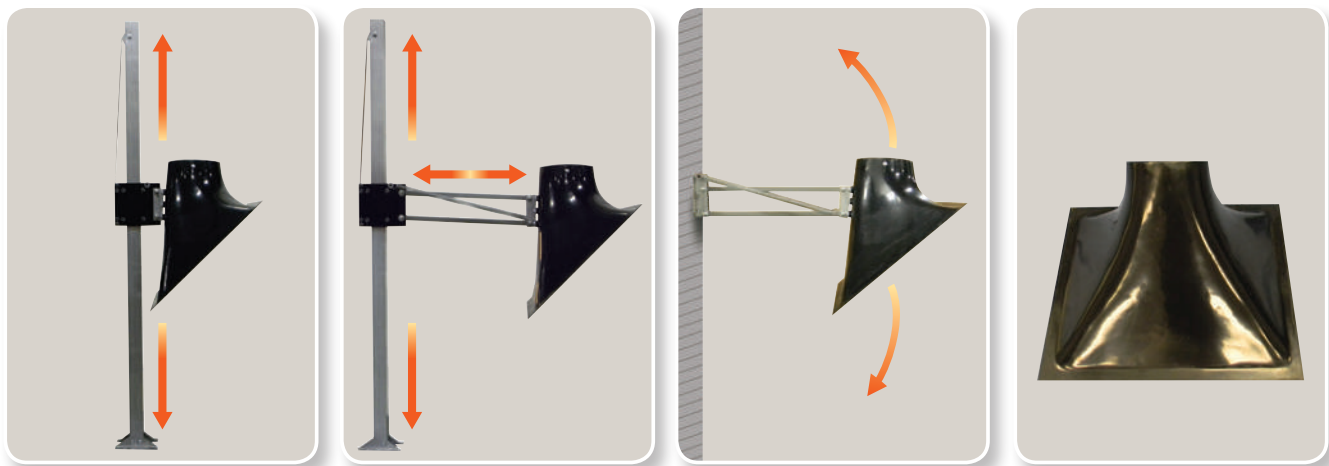
Model XA Wall-Mount
Extraction Arm Reach



Model XA-T Telescopic
Extraction Arm Reach

Extraction Hood Features

United Air Specialists base-mount and wall-mount extraction hoods are designed specifically for use in applications where minimal hood movement is required. They are available in four models to meet your specific process and work area requirements, including a hood only option.



Model XHV

Model XHV-E

Model XHW-E

Model XH

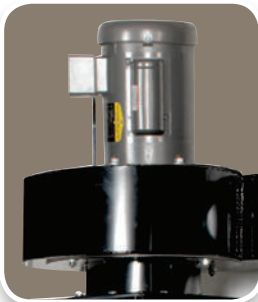
Model	XHV	XHV-E	XHW-E	XH
Hood Size	20 in. x 24 in. and 24 in. x 36 in. (508 mm x 609.6 mm and 609.6 mm x 914.4 mm)			
Diameter	8 in. (203 mm)			
Mounting Option	Base-mount or wall-mount		Wall-mount only	Rectangular hood only

Source Capture Accessories

- Arc sensors
- Exhaust fans (Blowers)
- Hood mounted on/off switch
- Hood with light kit
- Magnetic hoods with wear strip flexible duct
- Extension boom arms
- Wall mounting brackets



Fan On/Off Switch



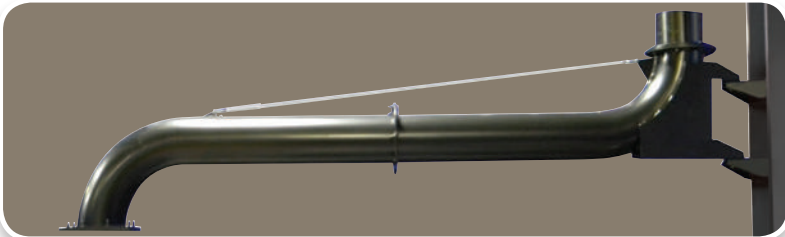
Exhaust Fan



Hood On/Off Switch
with Light Kit



Magnetic Hood with Wear Strip
Flexible Duct



Extension Boom Arm — Available in 8 ft. Length

Parker Hannifin is committed to providing clean air solutions that protect your employees, improve plant performance and enable you to realize your operating goals.

Our commitment is backed by continuous investment in research, leading-edge technology and product development, our people whom are the most knowledgeable in the industry, and a product portfolio that is proven to deliver results. We have been solving problems for you, our customers across the globe for over 50 years.

Germany

Otto-Hahn-Strasse 6
D-65520 Bad Camberg
Germany
T: +49-6434-94220
Email: info@uas-inc.de
www.uas-inc.de

United Kingdom

Aston Lane North
Preston Brook
Runcorn, Cheshire
United Kingdom WA7 3GA
T: +44-1925-654321
Email: uas@clarcoruk.com
www.uasuk.com

China

1002 Unit 02-04, Floor 10
Tower I, Shanghai Arch
No.523 Loushanguan Rd, Shanghai
China
T: +86-21-52768288
Email: uasinfo@uasinc-cn.com
www.uasinc-cn.com

Industrial Gas Filtration and Generation Division

4087 Walden Avenue
Lancaster NY 14086 USA
Ph: 800-252-4647
Ph: 513-891-0400

